

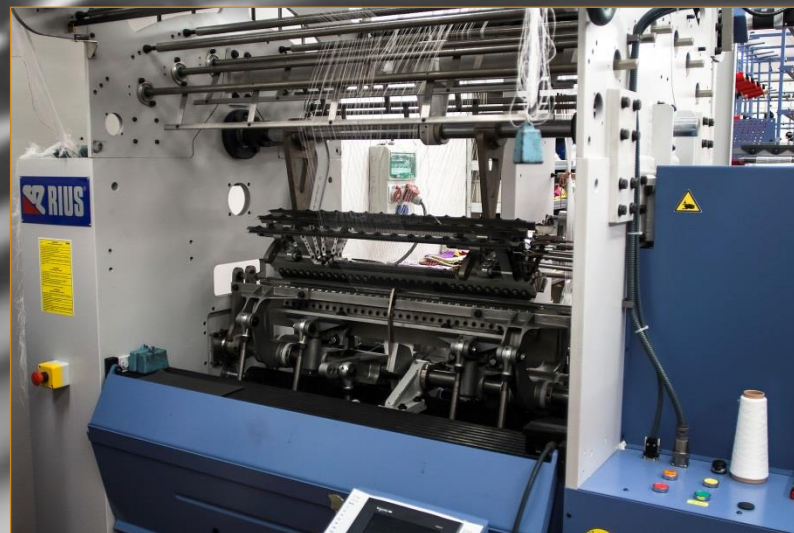
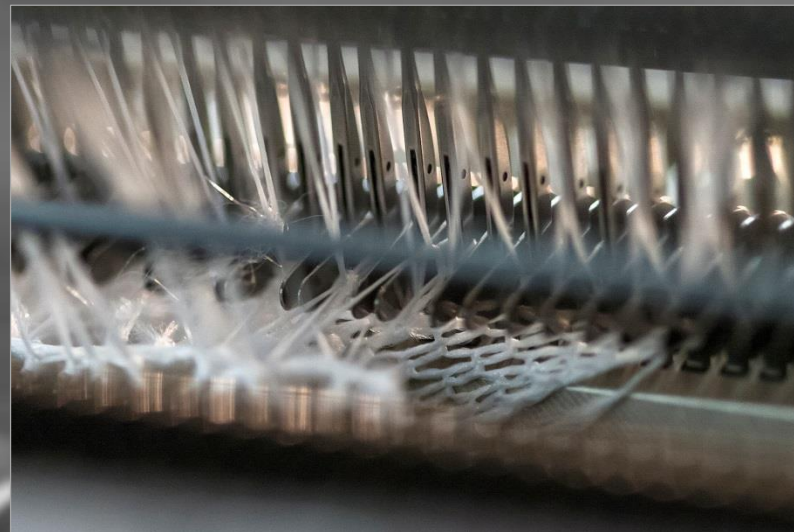
Research & Innovations

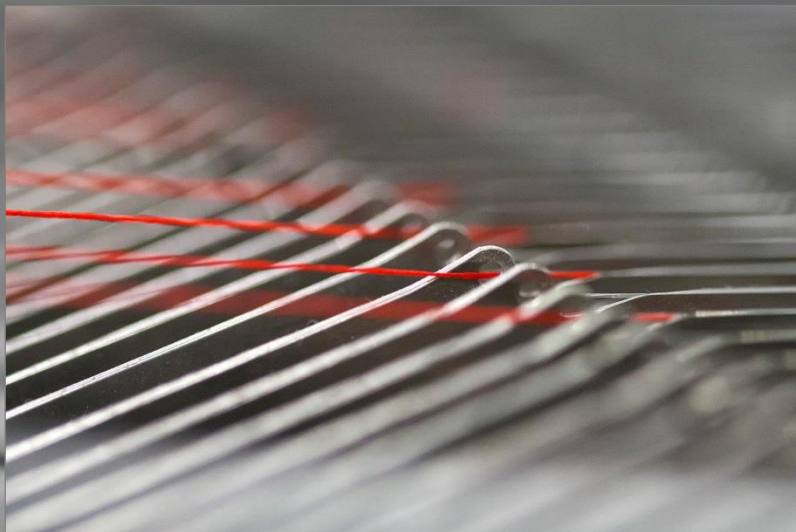
DEPARTMENT OF TEXTILE
TECHNOLOGIES
FT TUL

Knitting

Warp knitting

- Electronic double needle bed knitting machine - Rius Mini-Tronic MT.
- Variable distance between needle beds, gauge 12E, work width 800mm, 6 pattern bars.

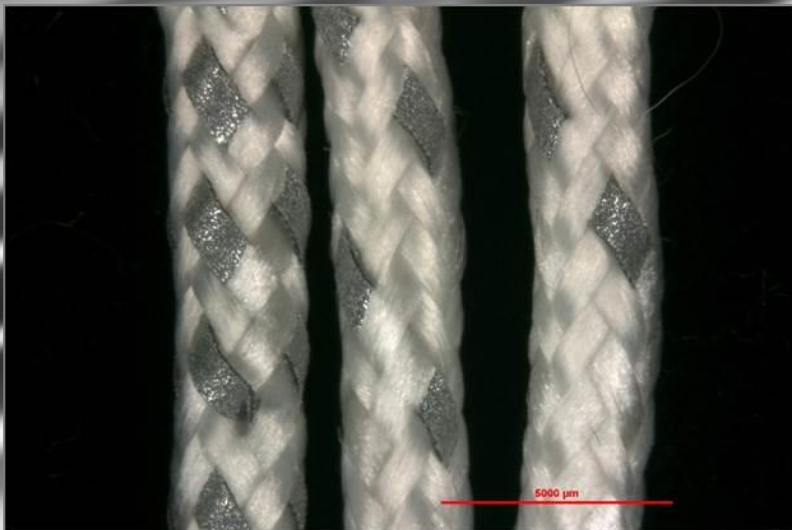




Warp knitting

- Crochet machine - Rius Medical, gauge 10E





Braiding

- Braiding machines with different number of spindles: 2x16; 40; 96 spindles
- Production of ropes with and without core

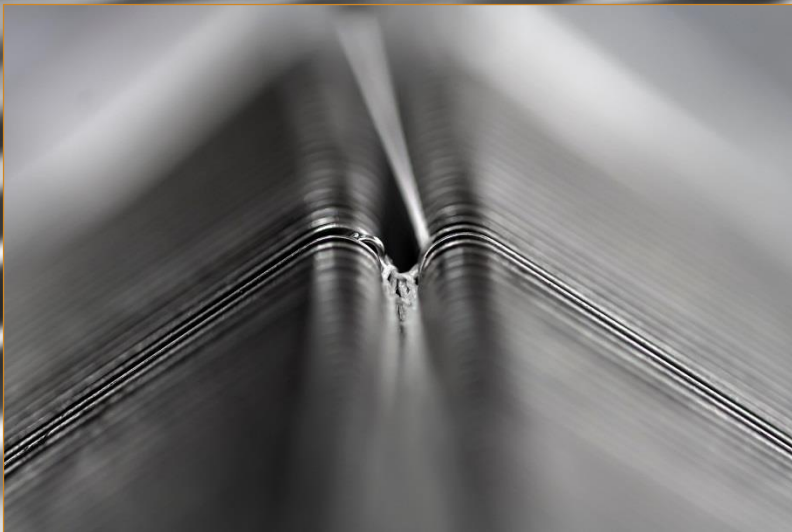
Braiding machines





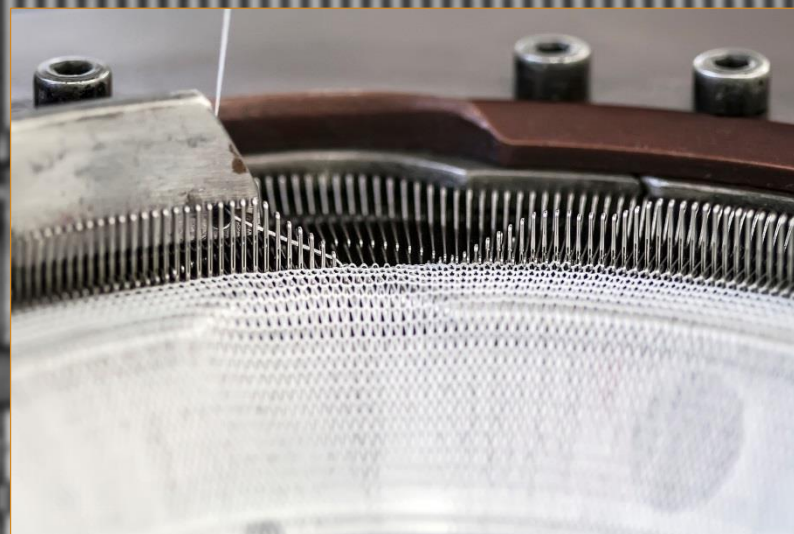
Weft knitting

- Flat knitting machine for medical use - Harry Lucas (gauge 30E)

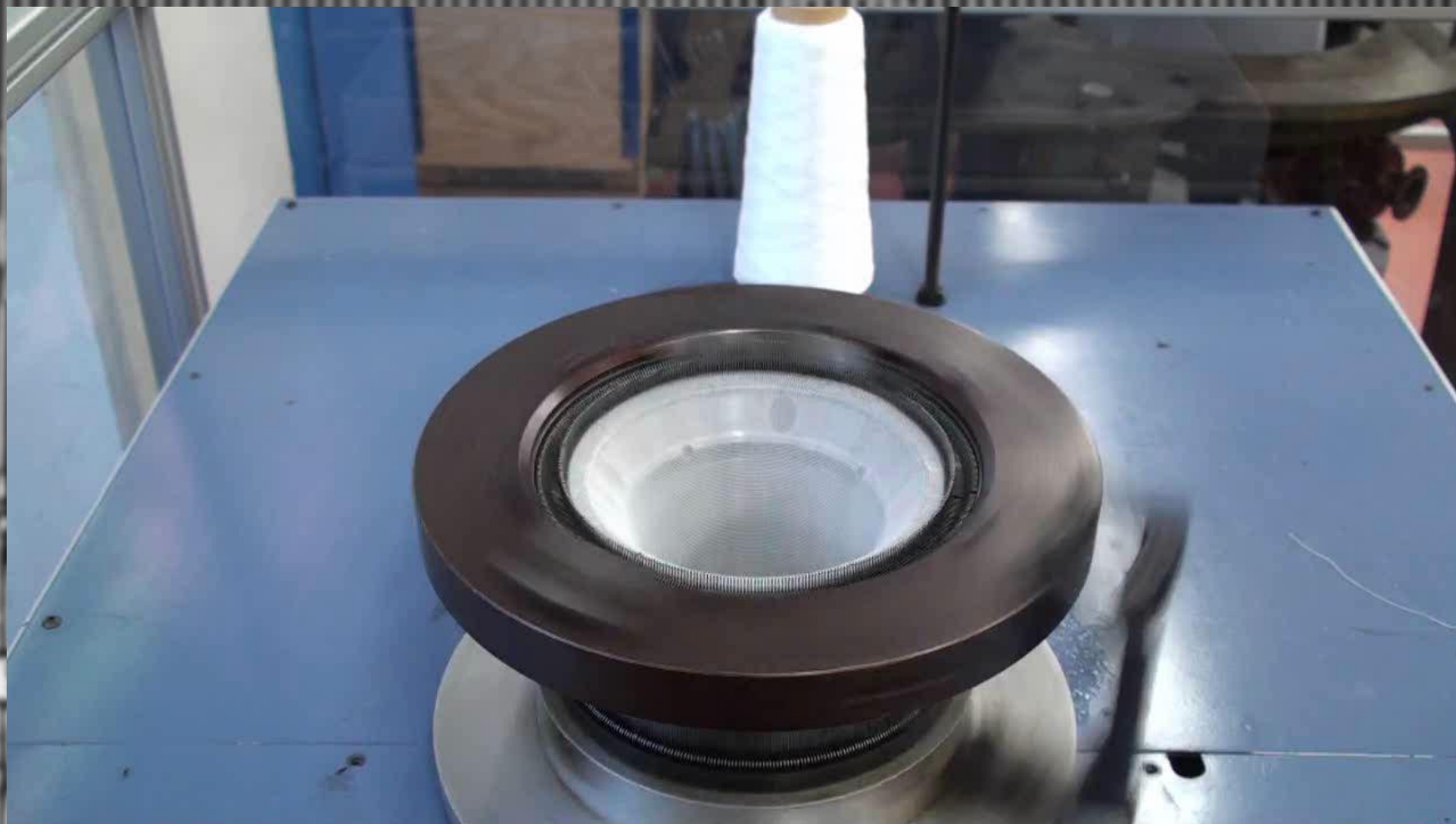


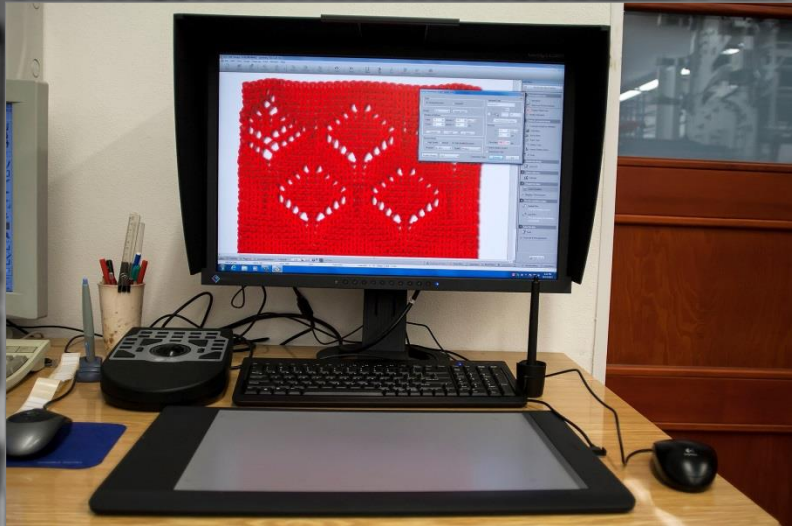
Weft knitting

- Circular knitting machines
- Fine rib circular body knitting machine Terot, 15E, d13"
- Plain circular knitting machine Rius E25; E20



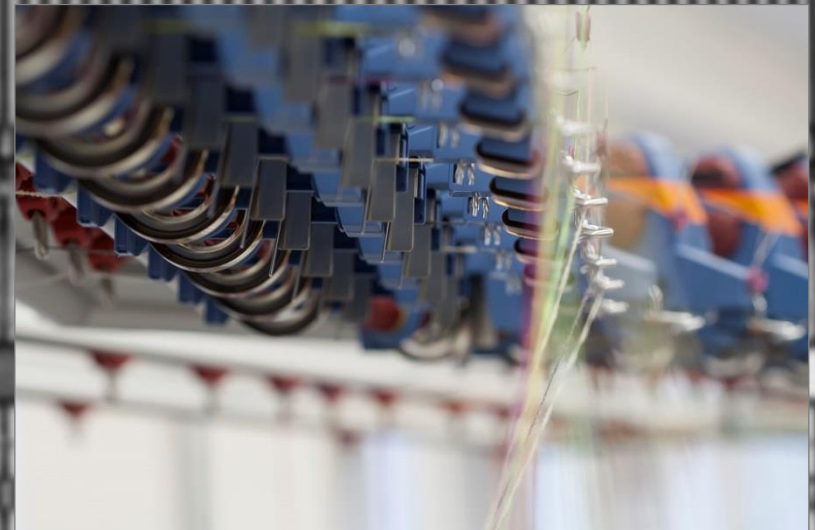
Plain circular knitting machine Rius E25





Weft knitting

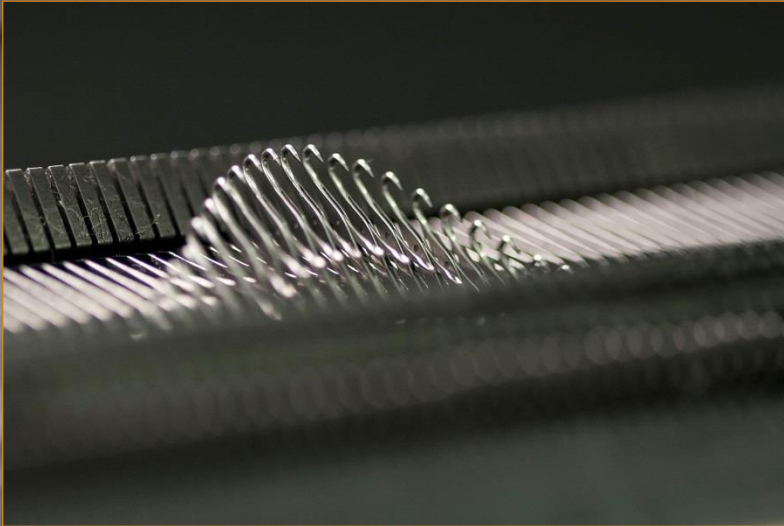
- Electronic flat knitting machine - Shima Seiki N5SG 122, multigaUGE E3,5.2; 2 systems
- CAD system - SDS One Apex





Electronic flat knitting machine - Shima Seiki

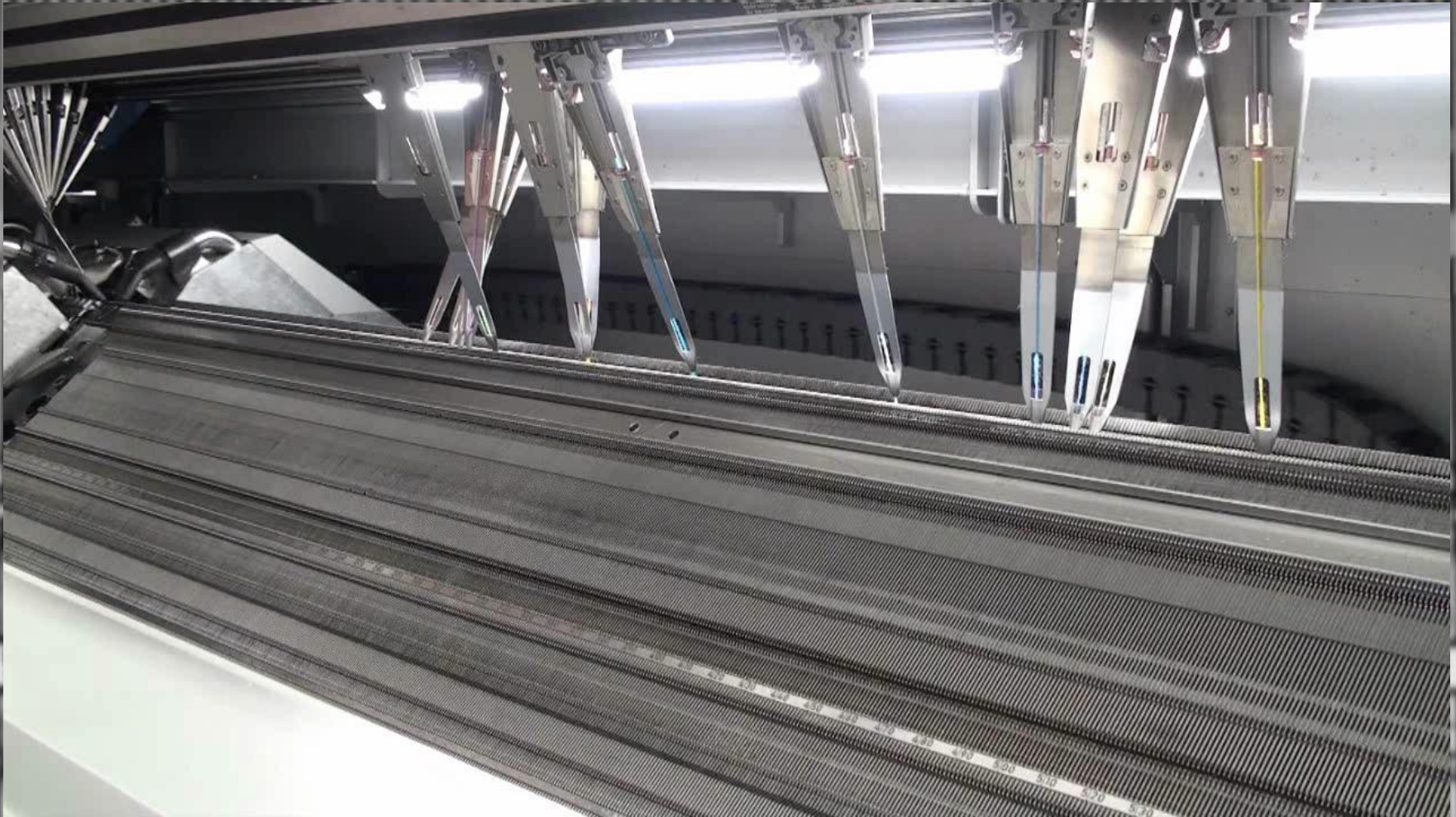




Weft knitting

- Electronic flat knitting machine – STOLL CMS ADF – intarsia machine
- Gauge 7.2, 3 systems

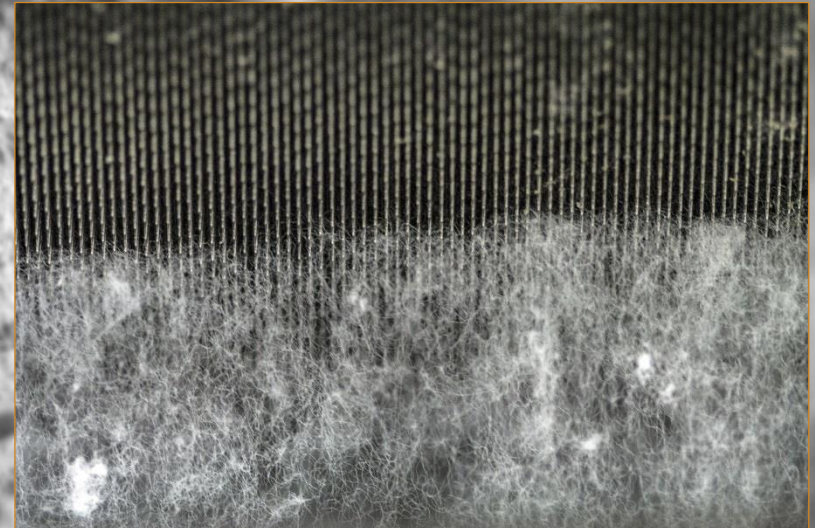
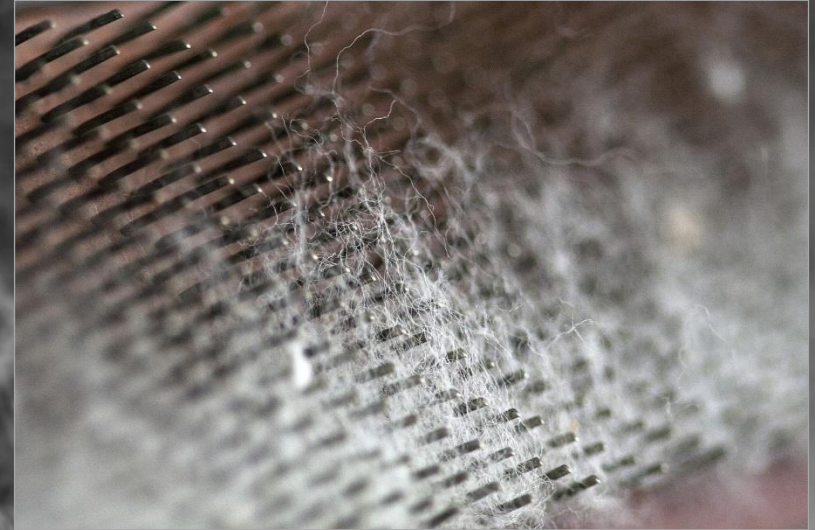
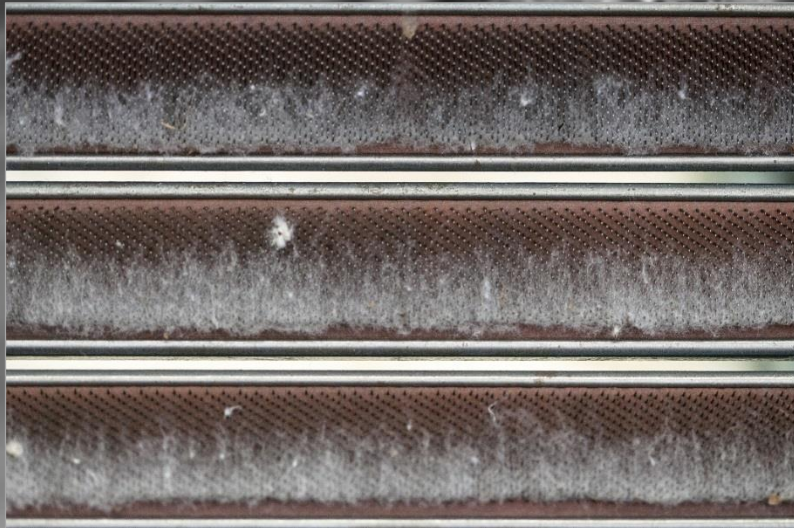
Electronic flat knitting machine – STOLL CMS ADF – intarsia machine

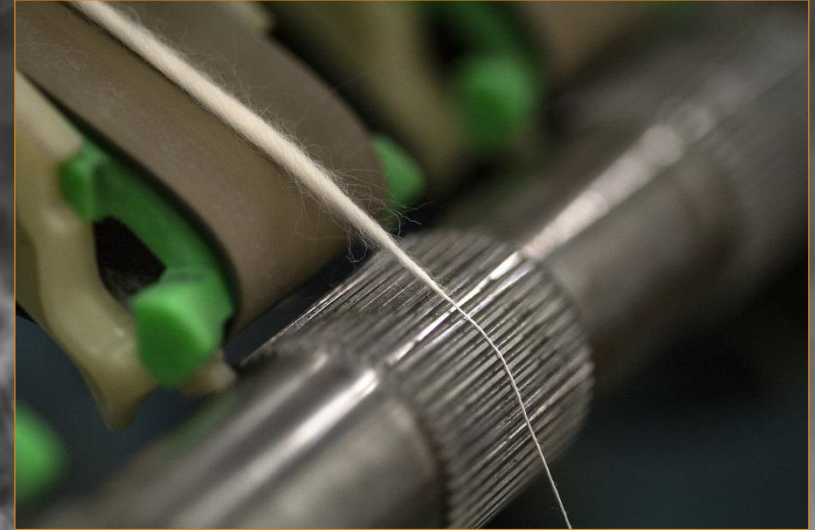
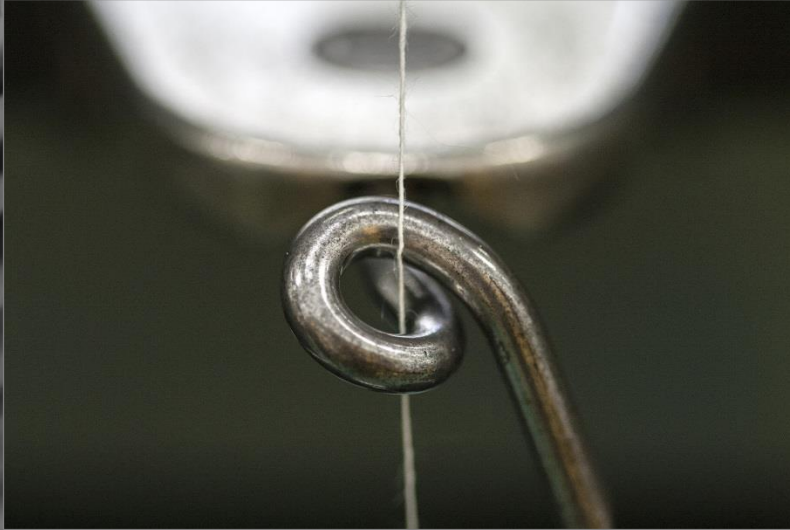


Spinning

Laboratory Flat Carding Machine

- Short fibres and impurities in the flat clothing
- Stripping fibres from the doffer - web forming



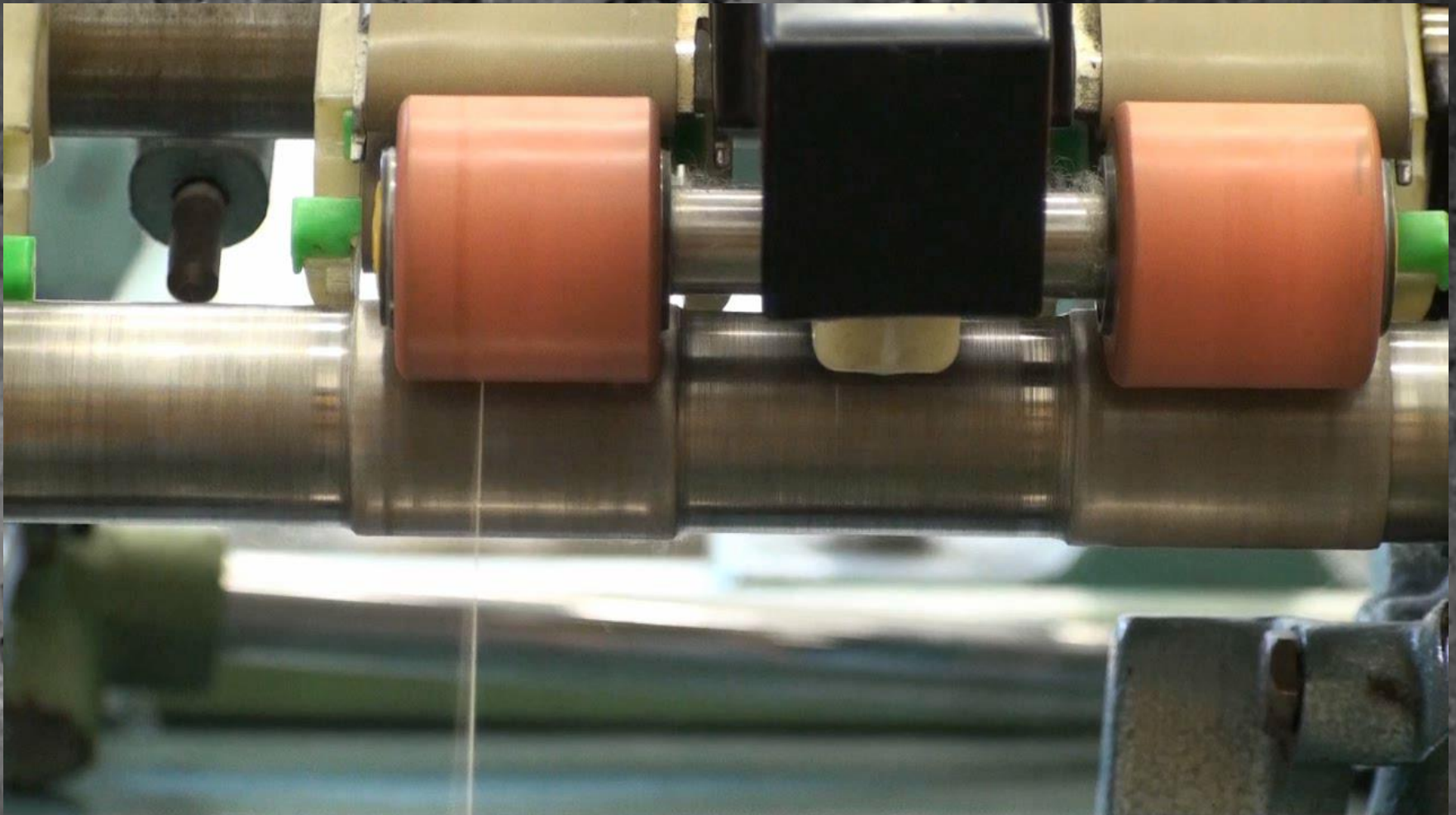


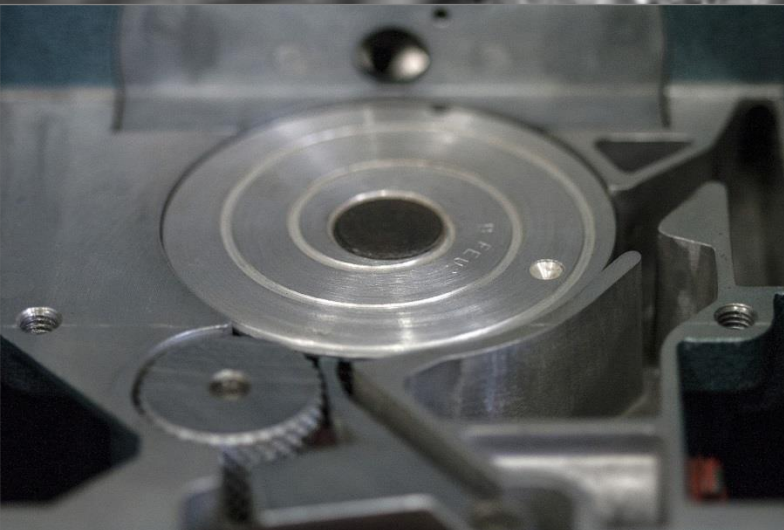
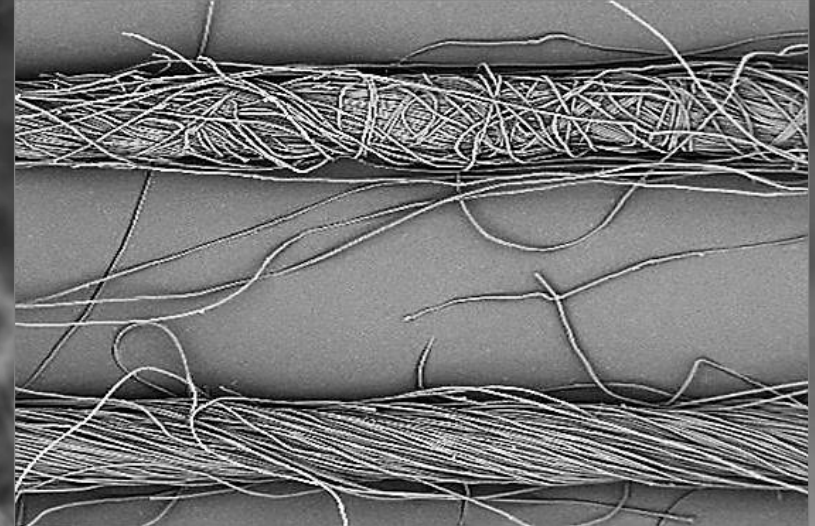
Laboratory Ring Spinning Machine

- Attenuation of roving into yarn count
- Yarn guiding in the eyelet
- Yarn drags the traveller which circulates on the ring = yarn twisting and winding



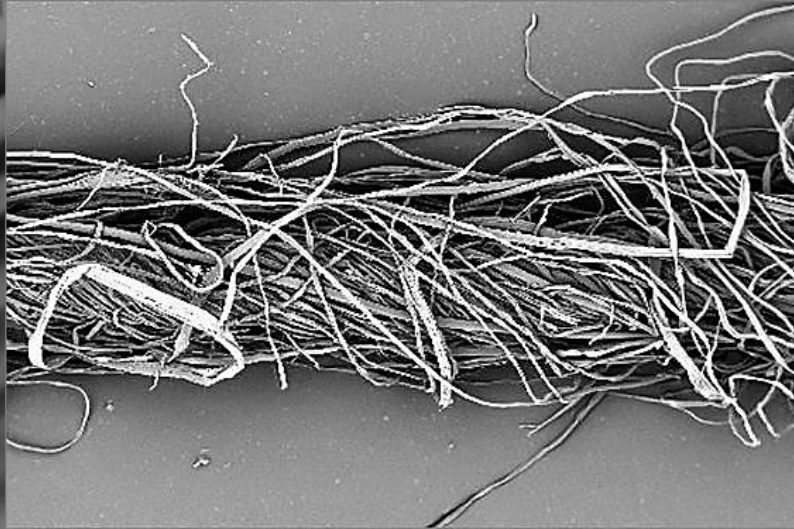
Laboratory Ring Spinning Machine





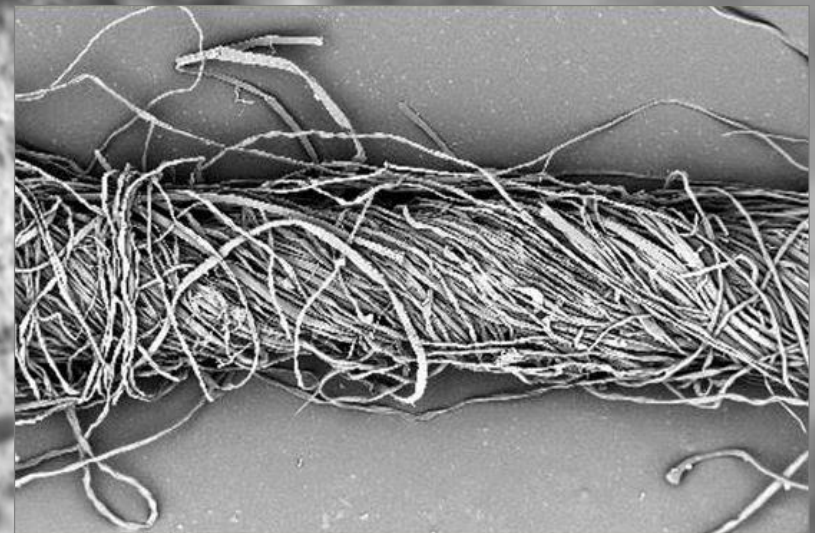
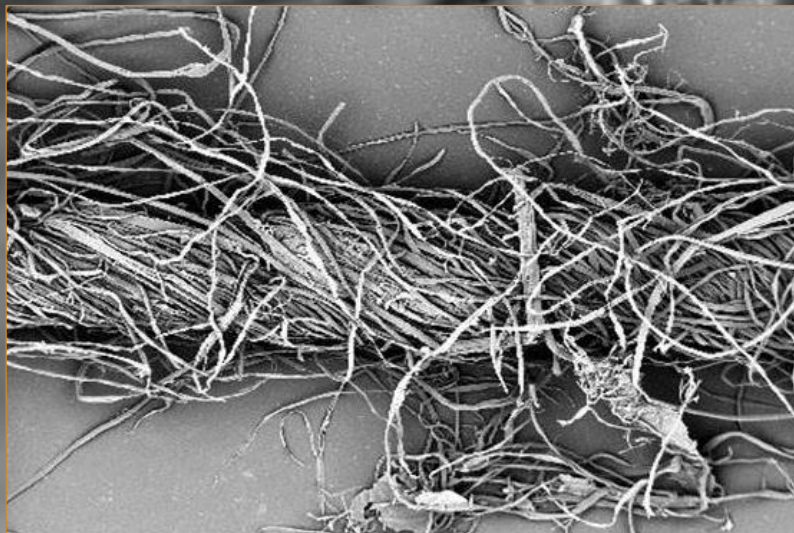
Rotor Spinning Machine BD - RNOM

- Fibrous strand in the rotor collection groove
- Detail of spinning box
- Comparison of structure of rotor and ring spun yarn



Yarn structure analysis

- Various quality of 50 % CO / 50 % CN rotor spun yarn - captured from one bobbin

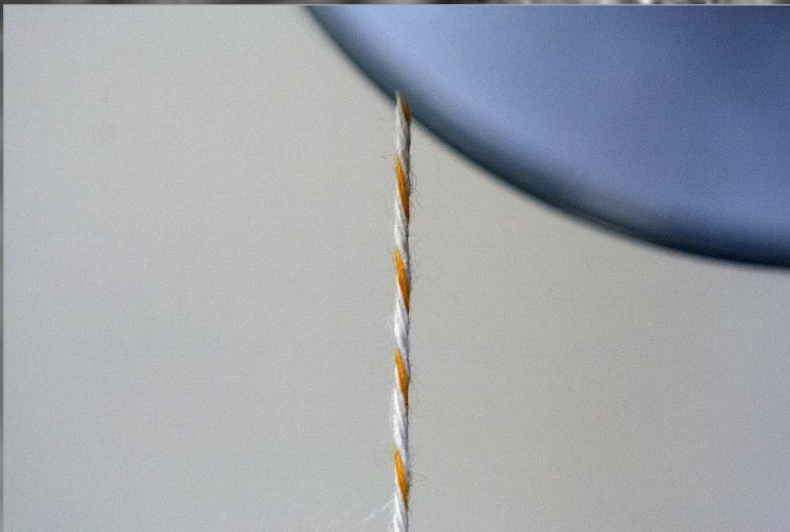
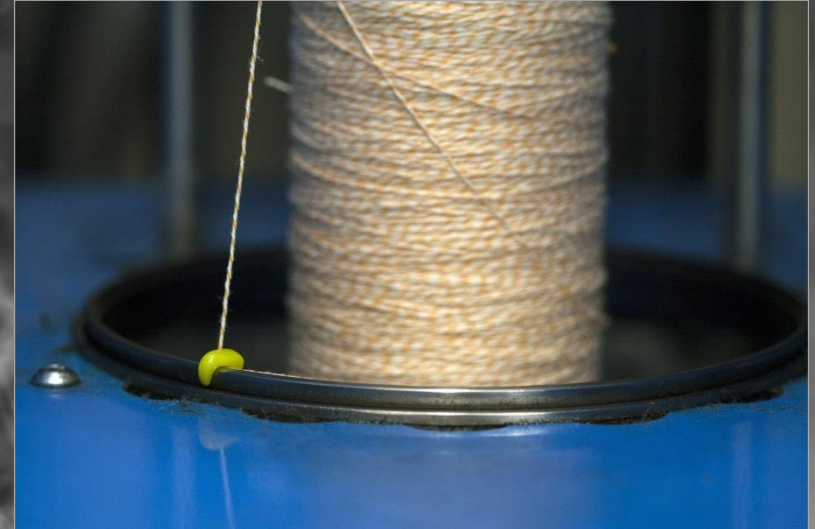


Winding machine

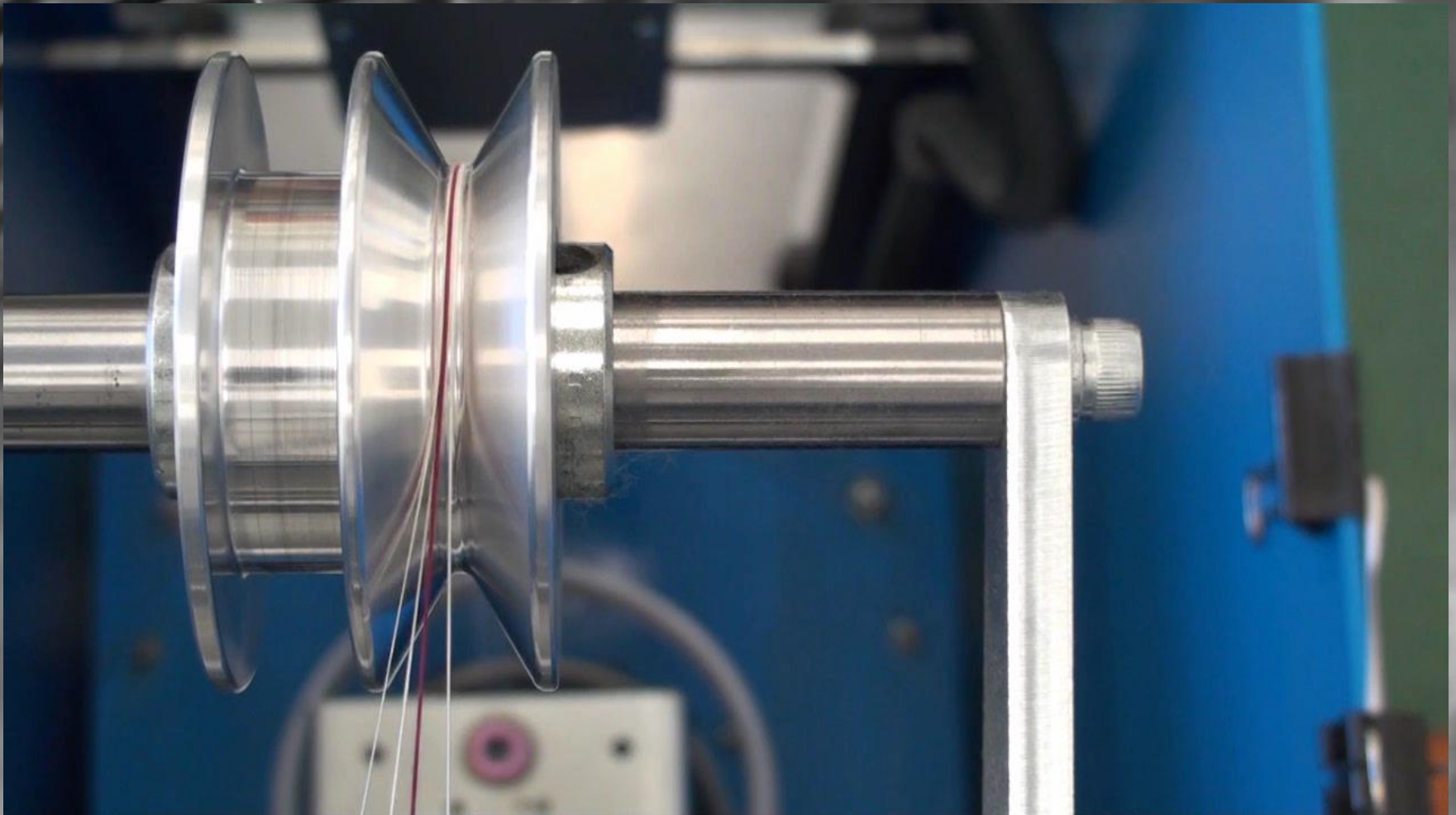


Ring Twisting Machine

- Plied yarn
- Untwisted plied yarn
- Yarn twisting and winding with the traveller, the ring and the spindle



Ring Twisting Machine





TECHNICAL UNIVERSITY OF LIBEREC
Faculty of Textile Engineering ■

www.ft.tul.cz
Czech Republic



Weaving

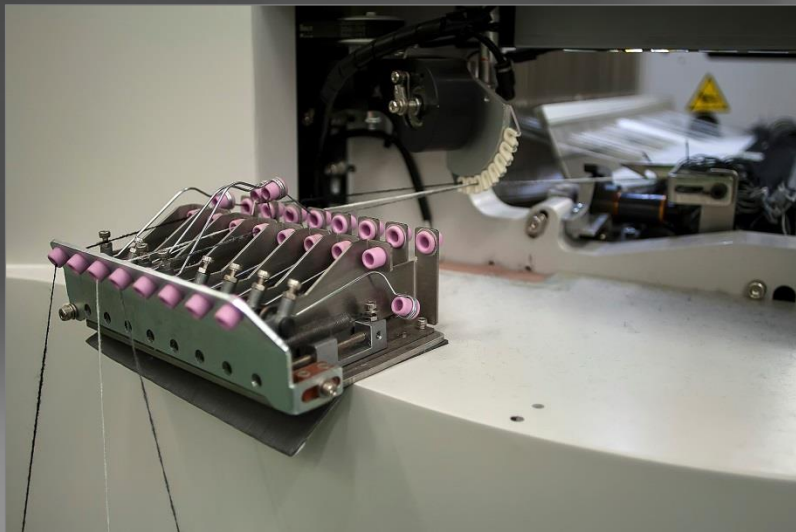
Jacquard Weaving

- Rapier weaving machine SOMET with electronic jacquard STÄUBLI (1344 hooks)



Rapier weaving machine (weaving of phosphoresce – luminescent effect)



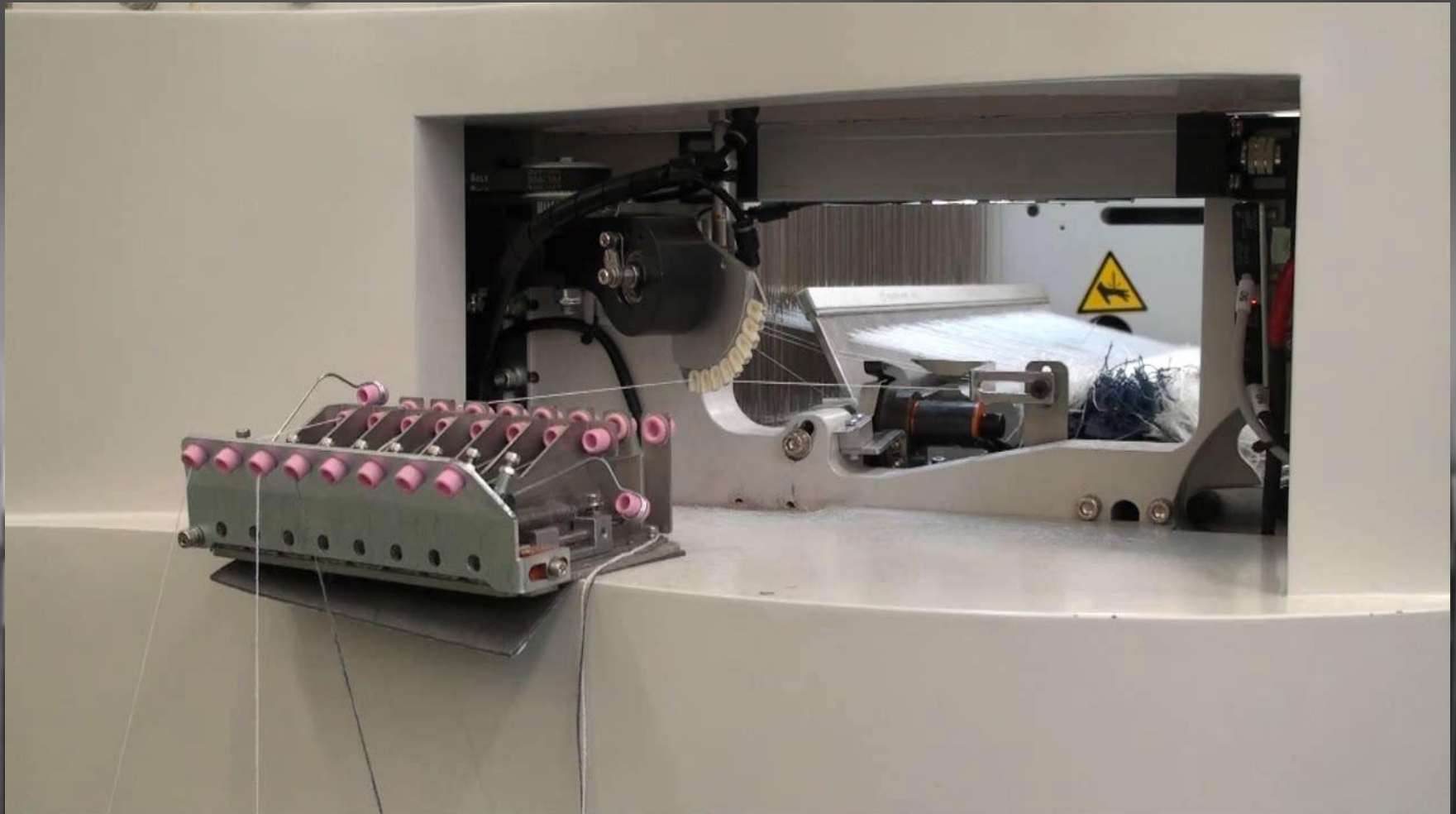


Jacquard Weaving

- Rapier laboratory weaving machine CCI with electronic jacquard BONAS (1344 hooks)



Rapier laboratory weaving machine CCI





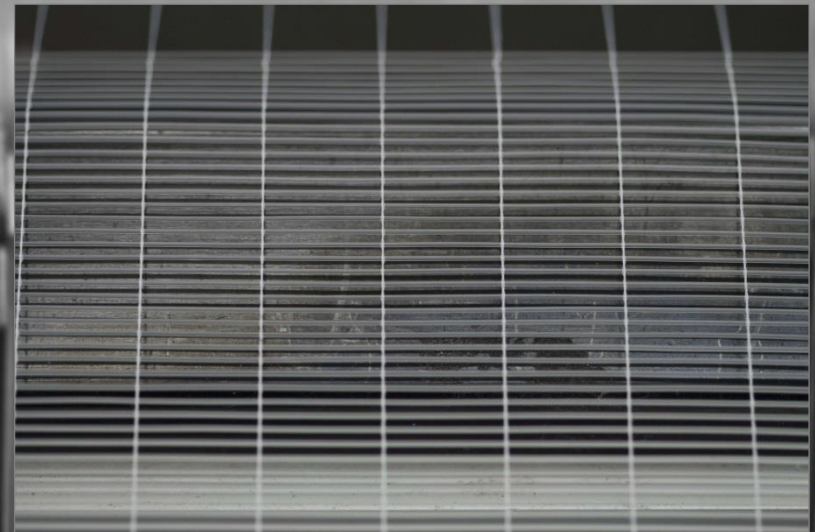
Jacquard Weaving

- Shuttle weaving machine with jacquard shedding mechanism (400hooks), medical application



Dobby weaving

- Laboratory rapier weaving loom with electronic leno shedding mechanism



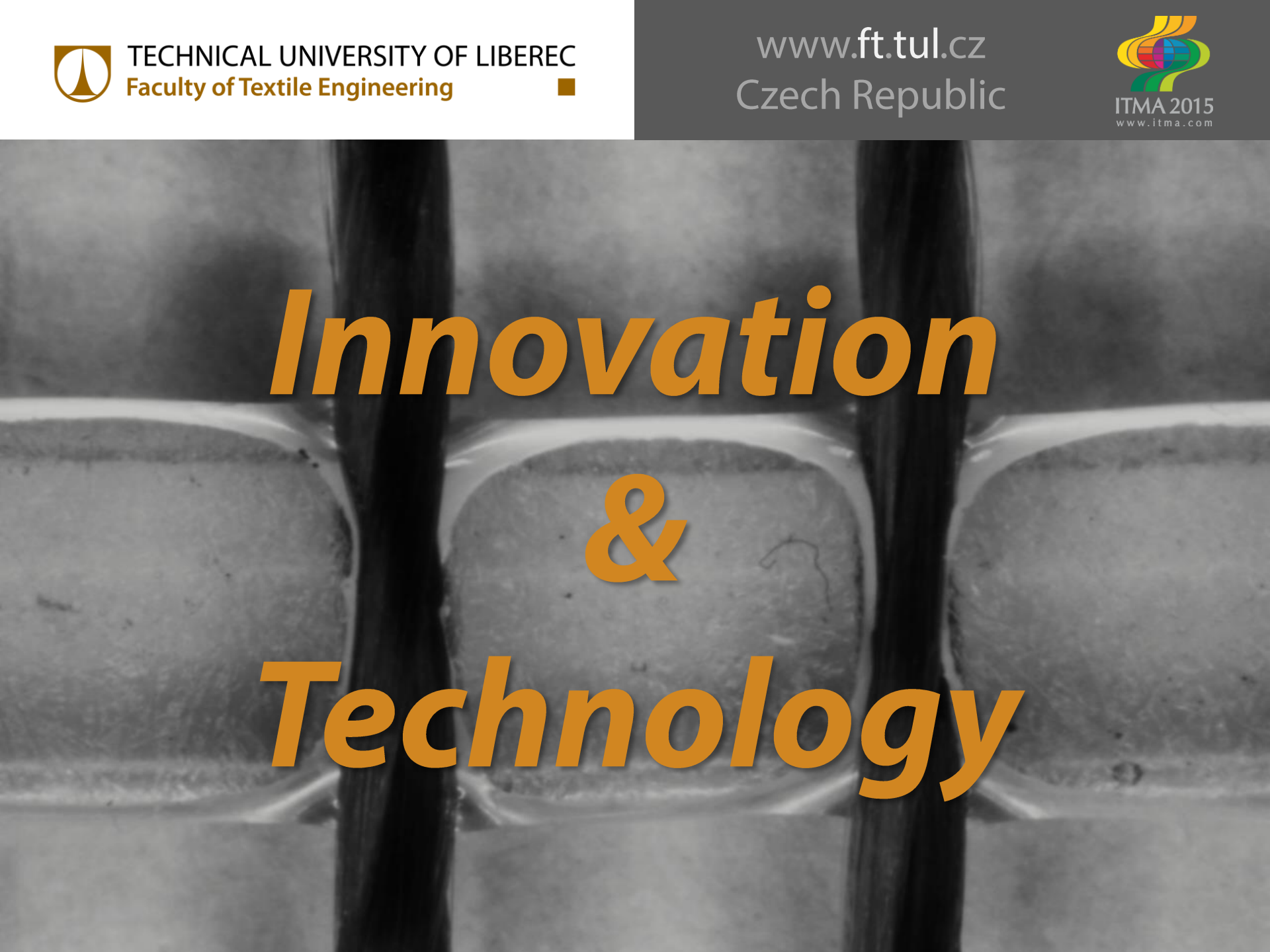
Laboratory rapier weaving loom with leno



Dobby weaving

- Laboratory rapier weaving loom with electronic shedding mechanism CCI (20 shafts)

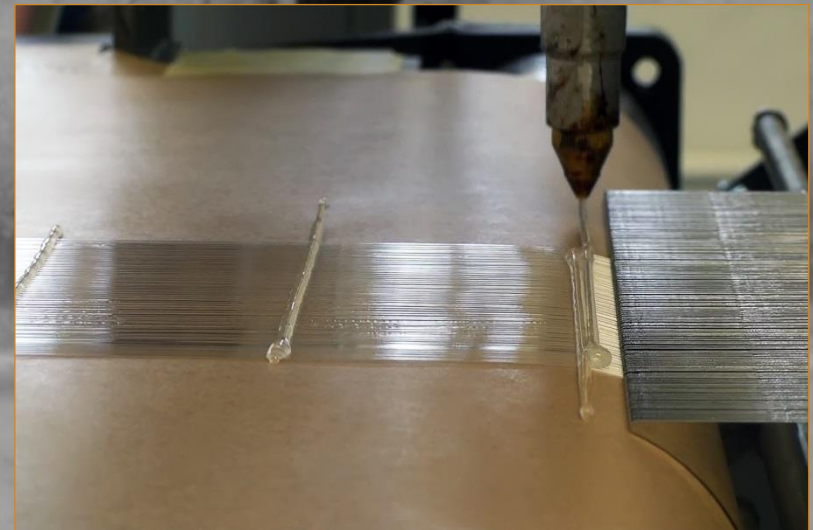
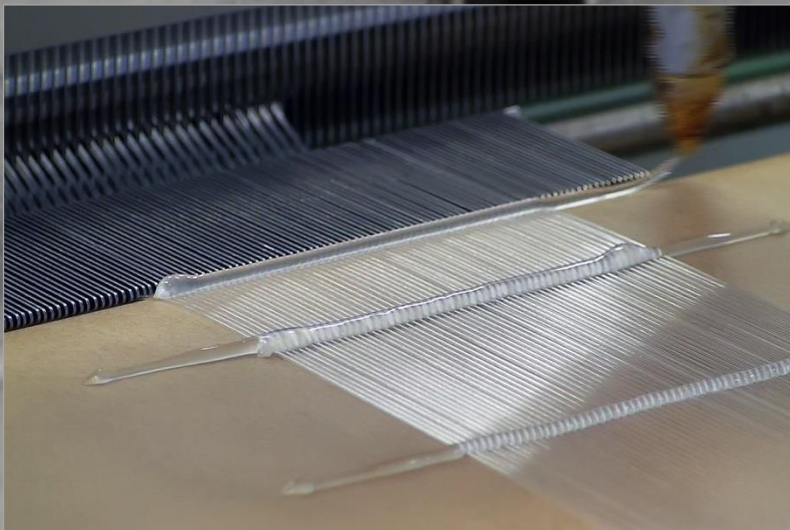
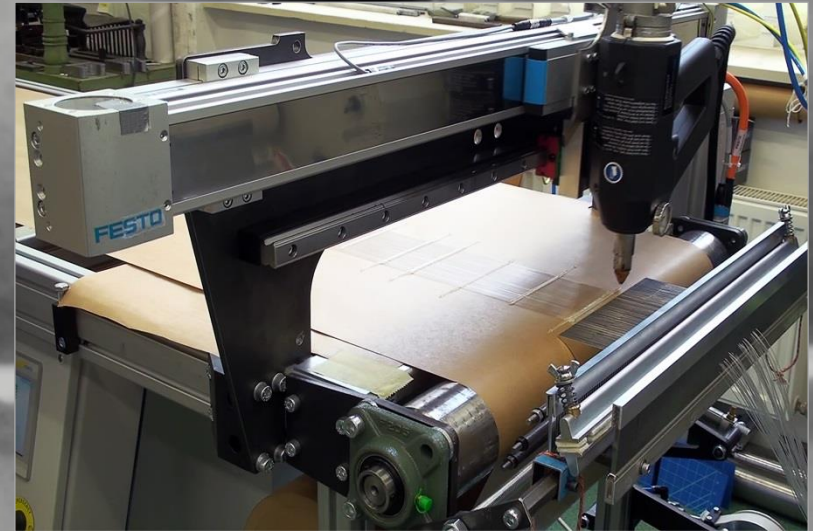


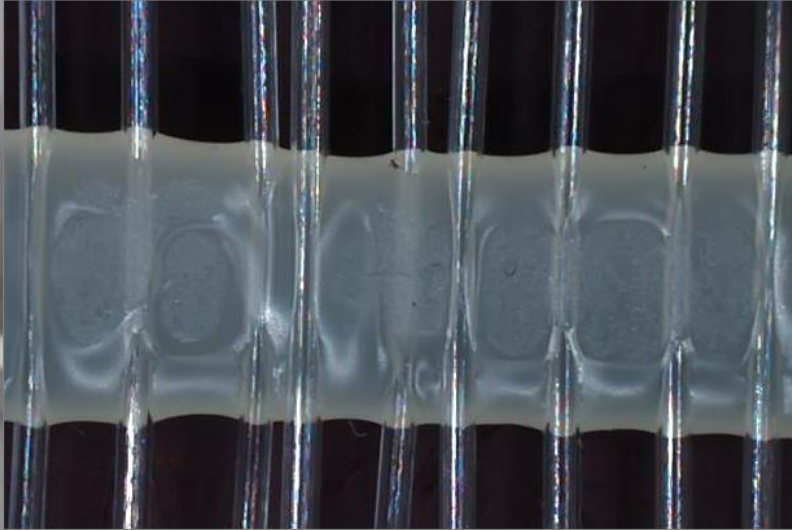


Innovation
&
Technology

Prototype technology

- Manufacturing of 2D structures bonded by perpendicular laying of the polymer melt





Application of technology

- Hollow-fiber heat exchanger
- Optical fibers in planar structure
- Waste water treatment composite structure



Manufacturing of 2D structures bonded by perpendicular laying of the polymer melt



***TECHNOLOGY WAS SUPPORTED
BY***

FESTO



TECHNICAL UNIVERSITY OF LIBEREC
Faculty of Textile Engineering ■

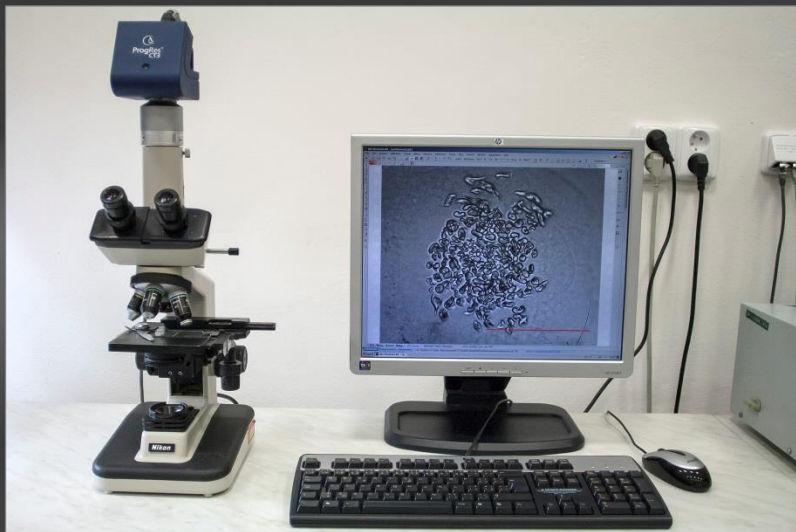
www.ft.tul.cz
Czech Republic



Testing

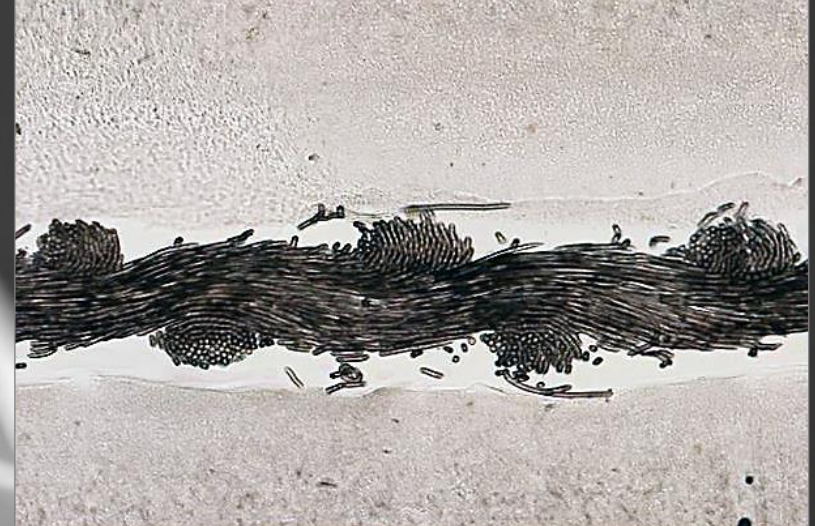
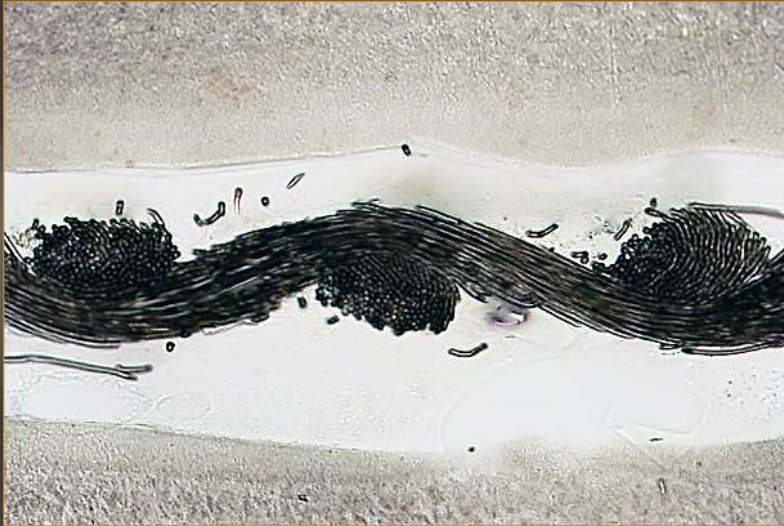
- Principle of the textile cross-section preparation, execution and presentation



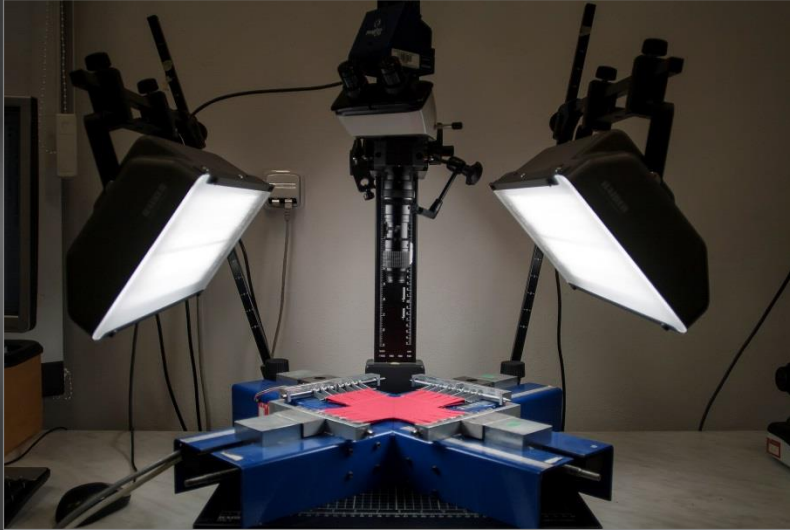


- Linear textile cross-section presentation, analysis





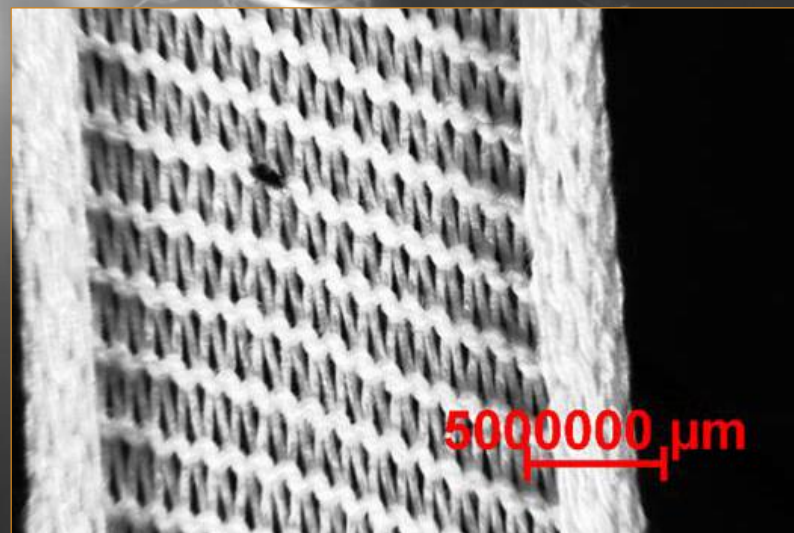
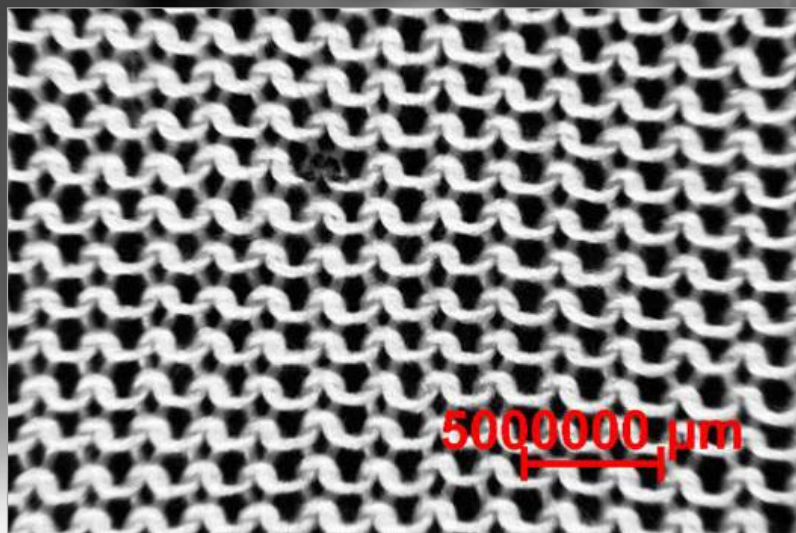
- Woven fabric cross-section, presentation, analysis



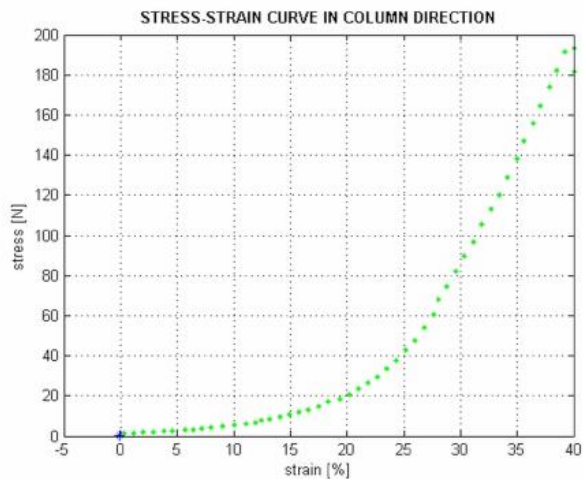
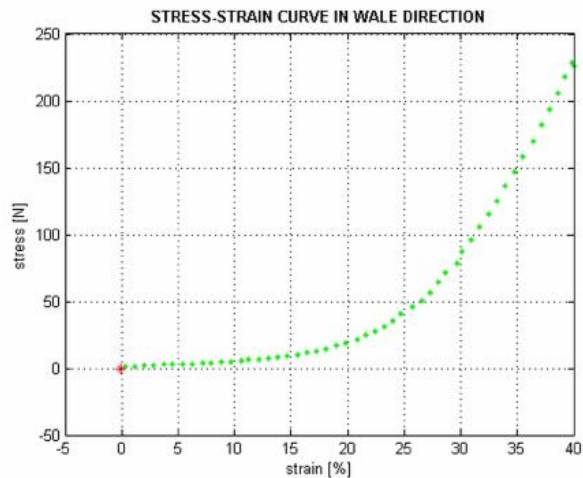
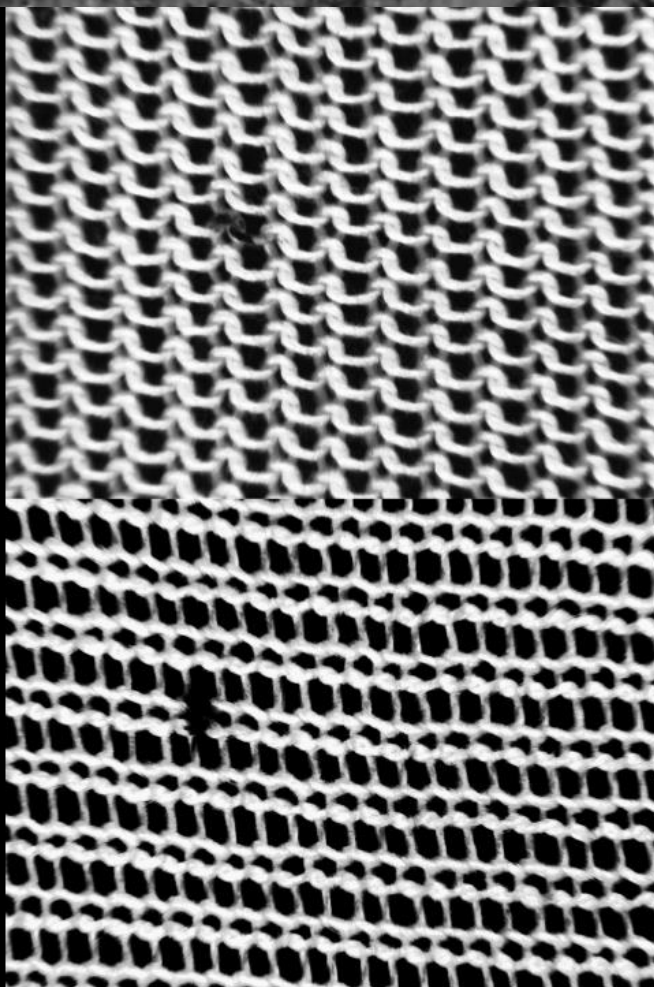
- BiaxiaL fabric loading

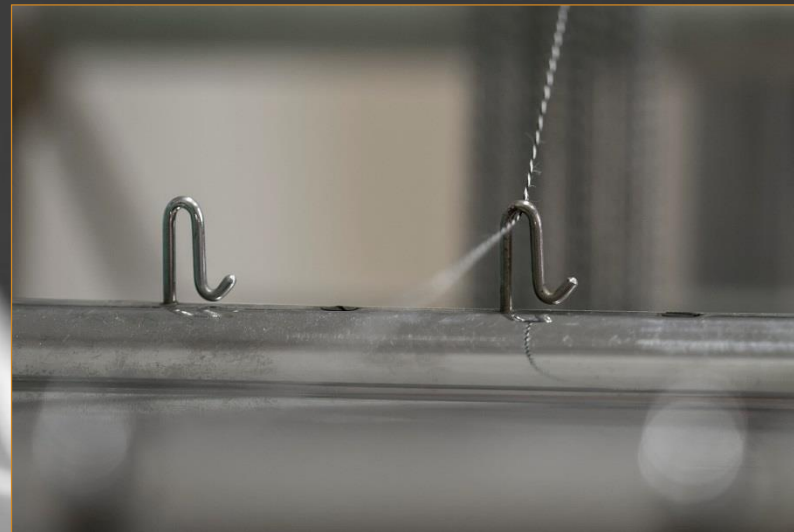


- Uniaxial fabric loading



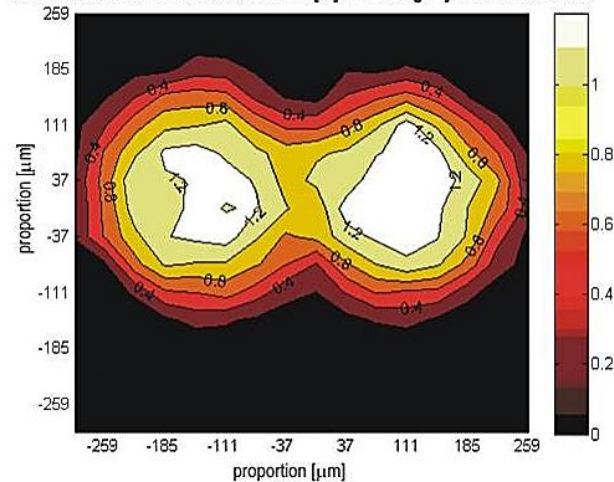
Uniaxial fabric loading

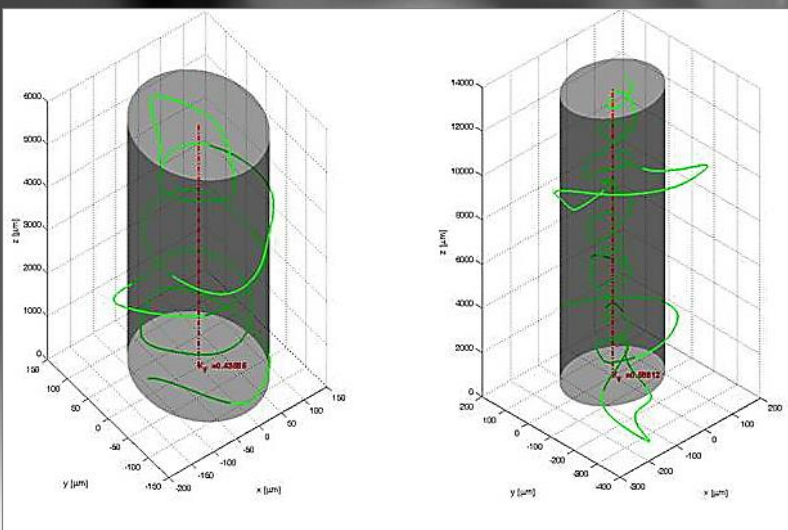
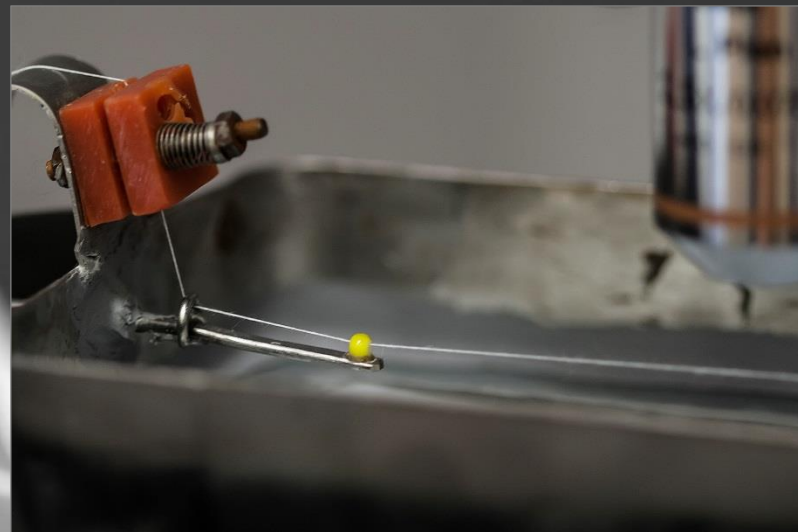




- Internal life of two-ply yarn

01 Distribution of relative fiber number [%] in "average" yarn cross-section



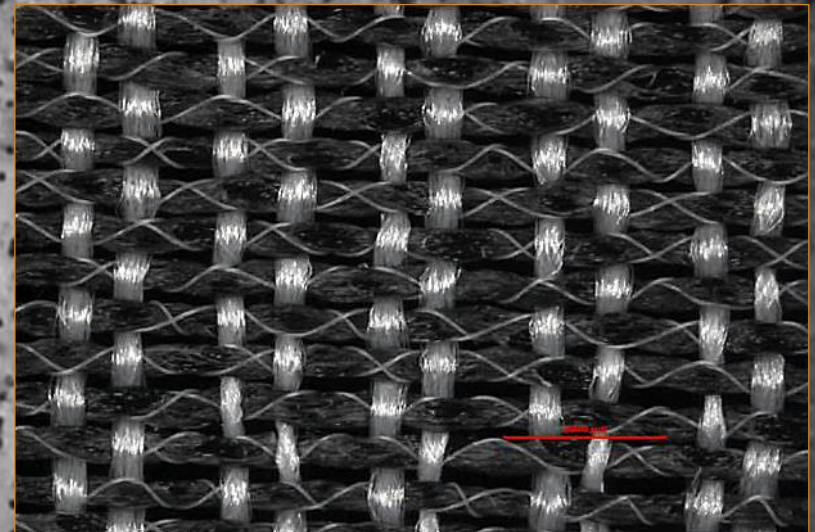
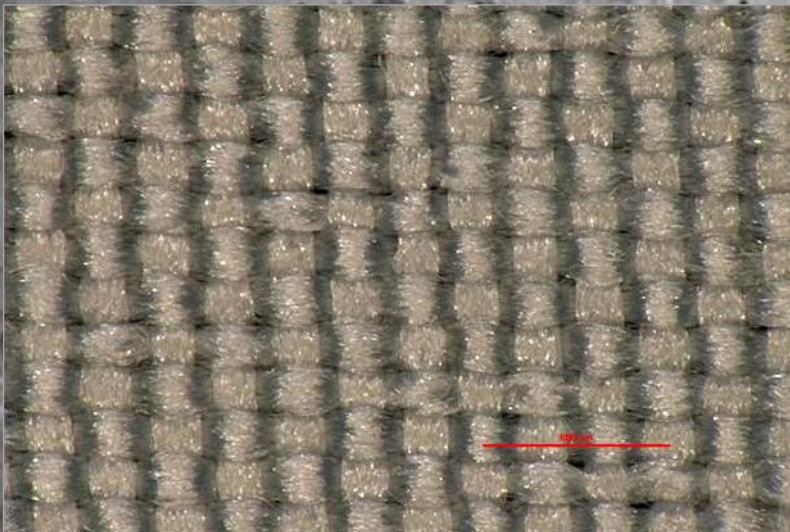


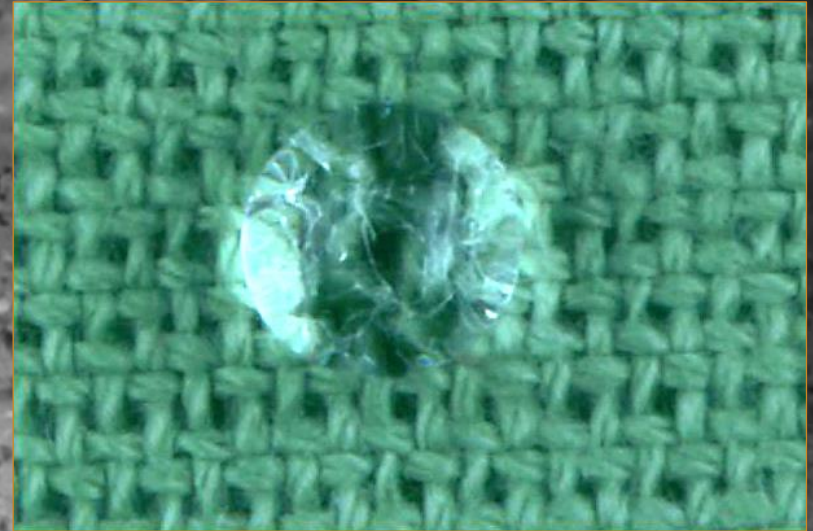
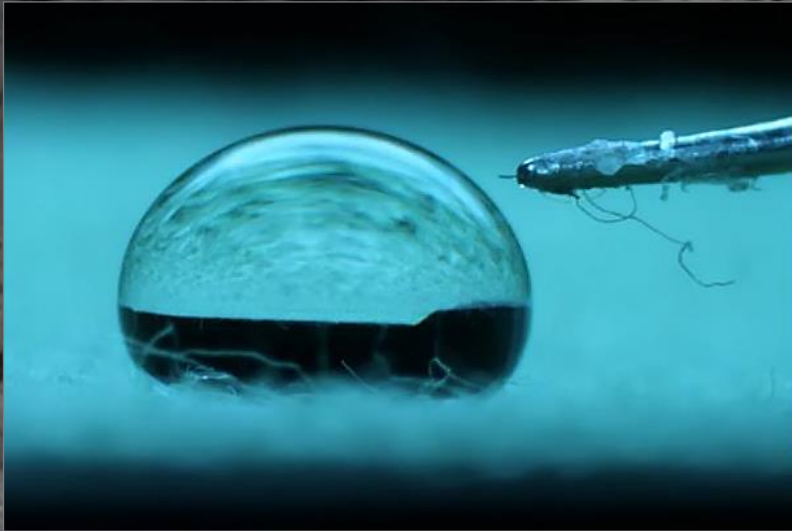
- Traces fiber technique – analysis of the yarn internal structure

Applications

Filtration and membranes structures

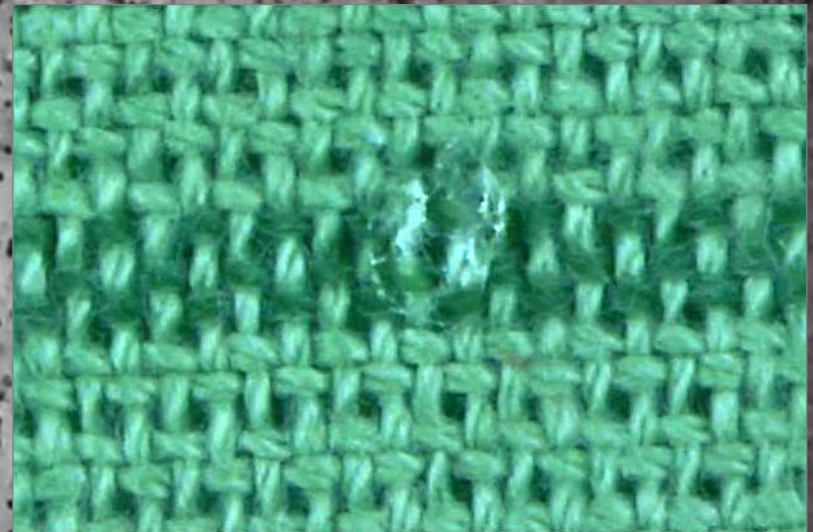
- Woven structure with multifilament 7,5tex 144fibrils
- Equipment for measuring of liquid permeability
- Woven structure with nano-covering of yarn

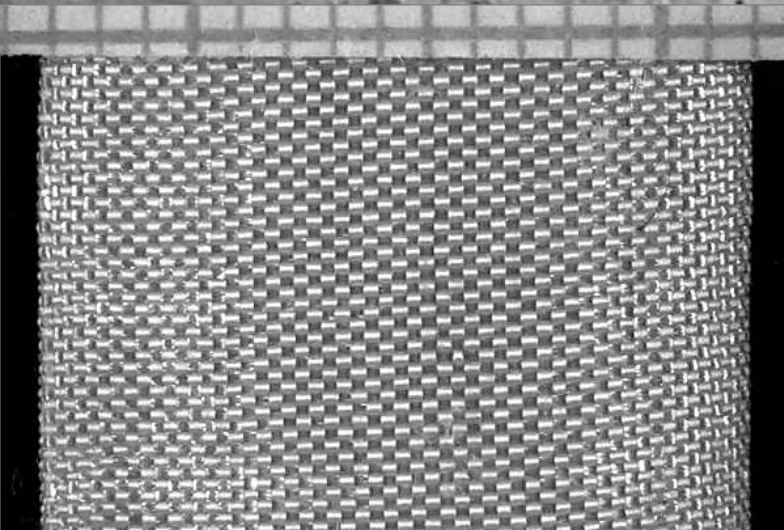
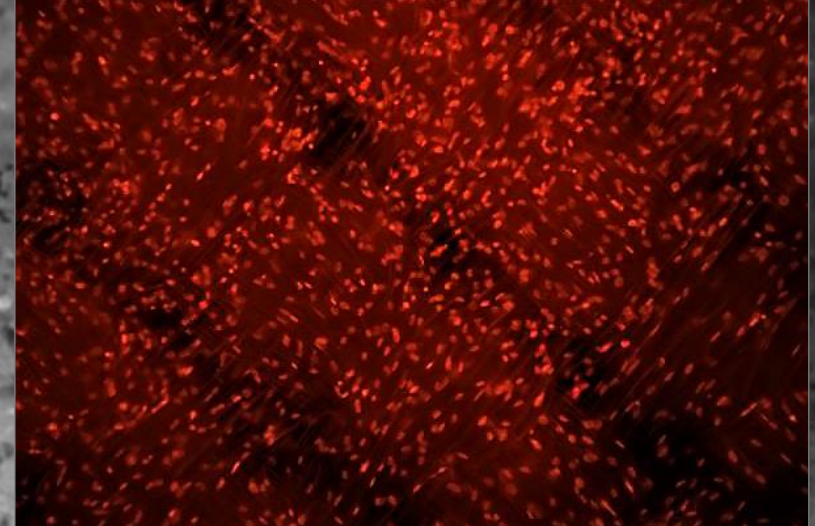
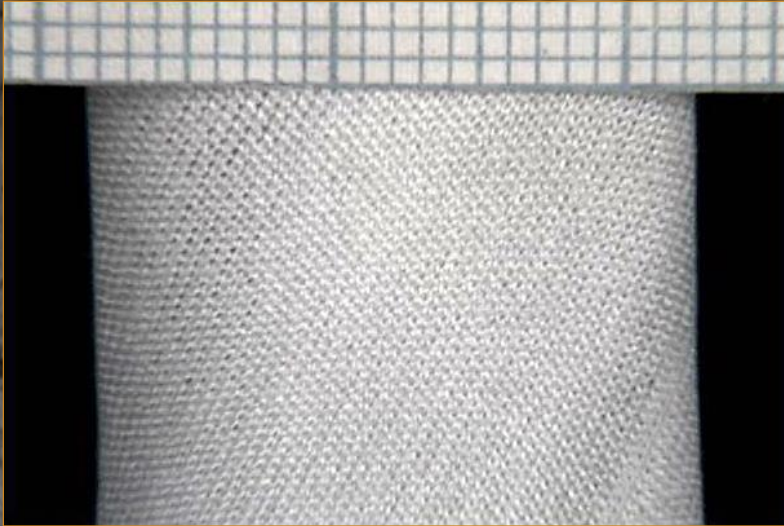




Transport of liquid in the woven structure

- Hydrophobic and hydrophilic effect in cotton woven structure





Synthetic vascular prosthesis

- Woven structure of tubular vascular prosthesis
- Knitted structure of tubular vascular prosthesis
- Proliferation of cells (woven structure)



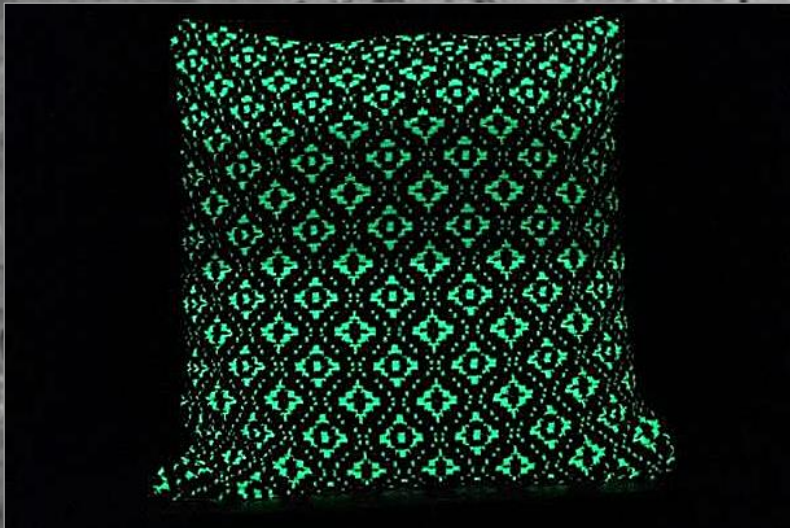
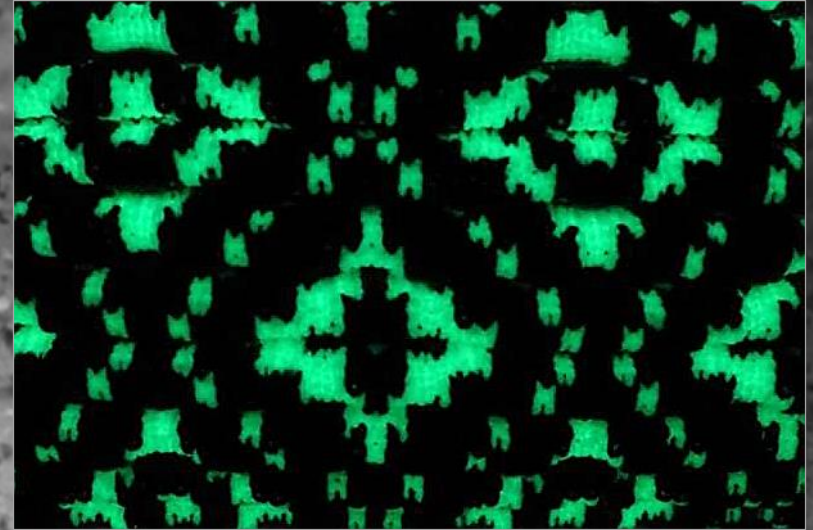
Lightning effect in woven structures

- Laboratory rapier weaving loom with electronic leno shedding mechanism



Lightning effect in knitted structures

- Phosphoresce – luminescent effect in knitted structure





Lighting effects in structure

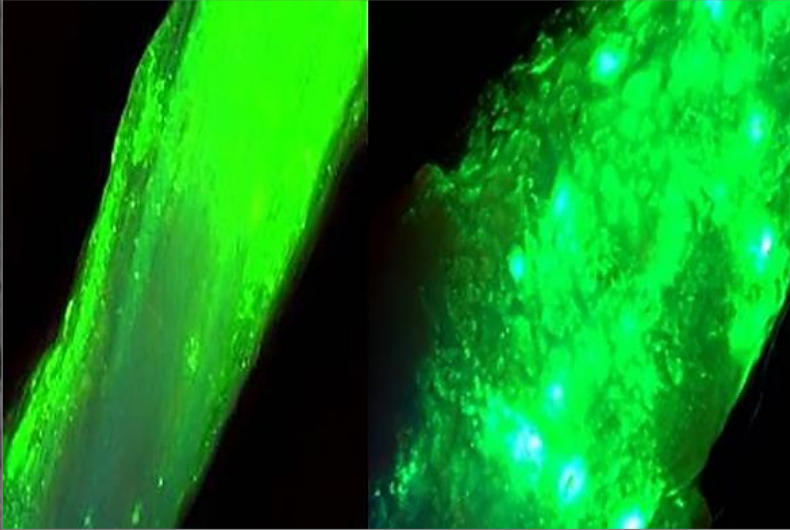
- Reflective yarn effect in 2D and 3D structures





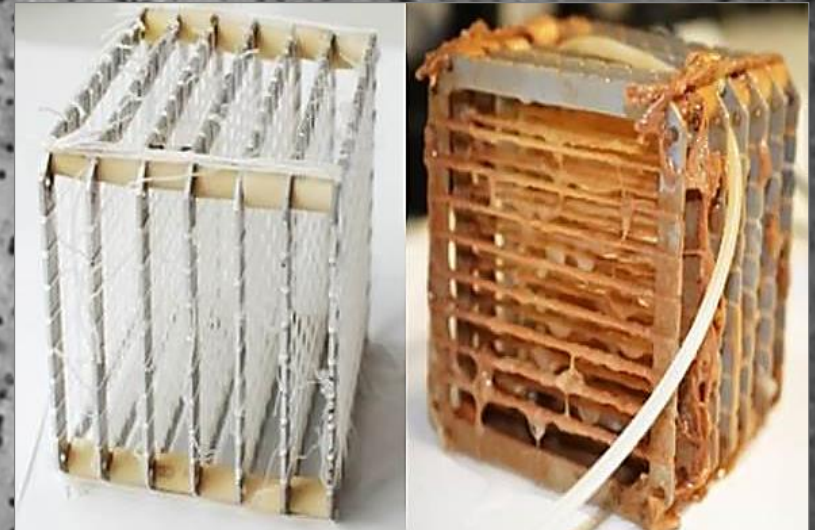
Hollow - fiber heat exchanger

- Textile structure bonded by perpendicular laying of polymer melt
- Heat exchanger
- Defect of structure - deformation of hollow fibers in interlacing point



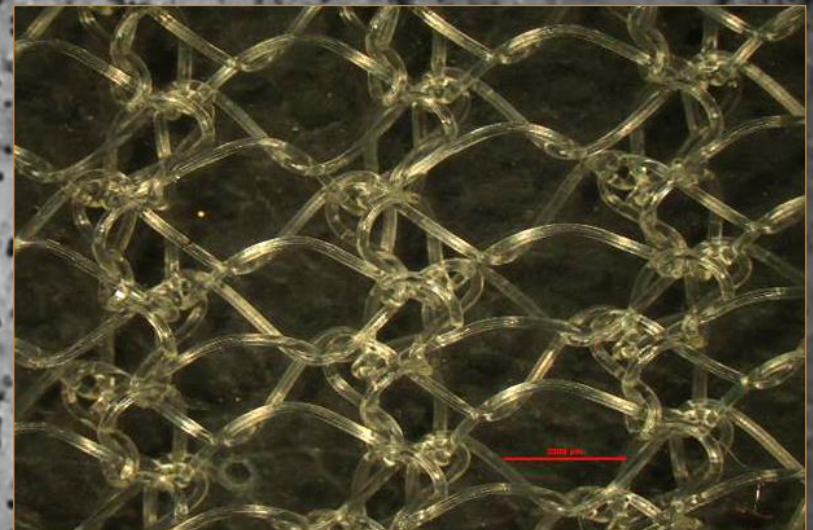
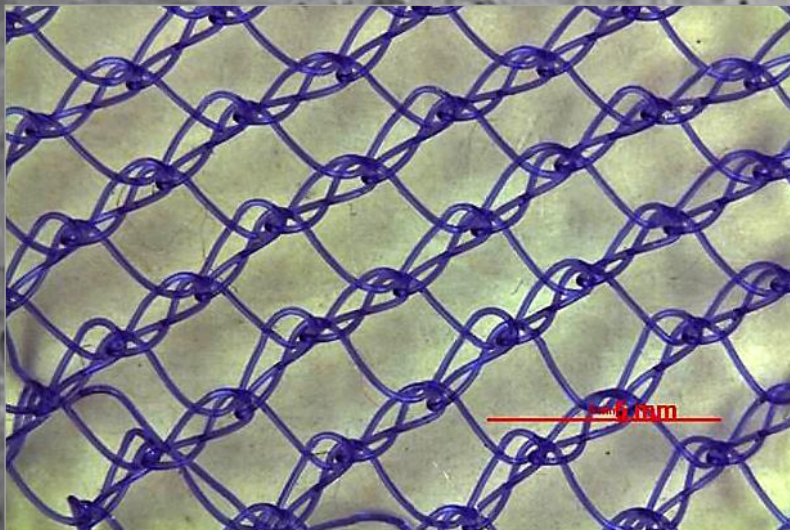
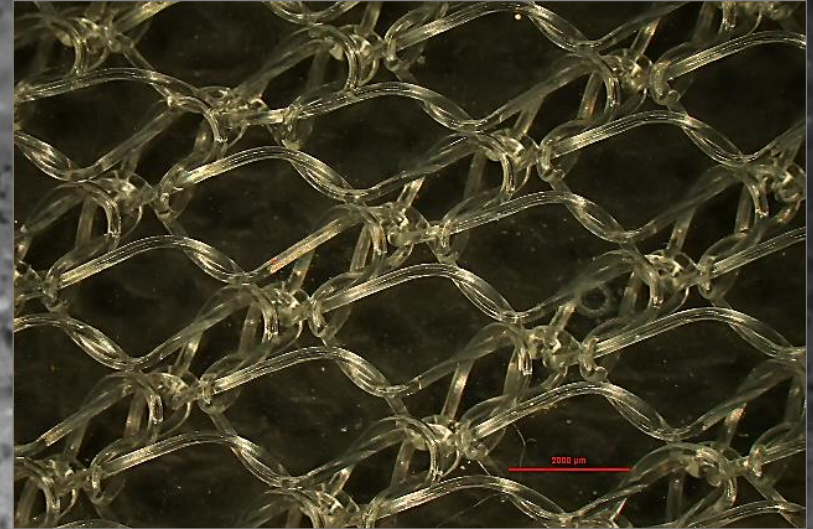
Wastewater treatment

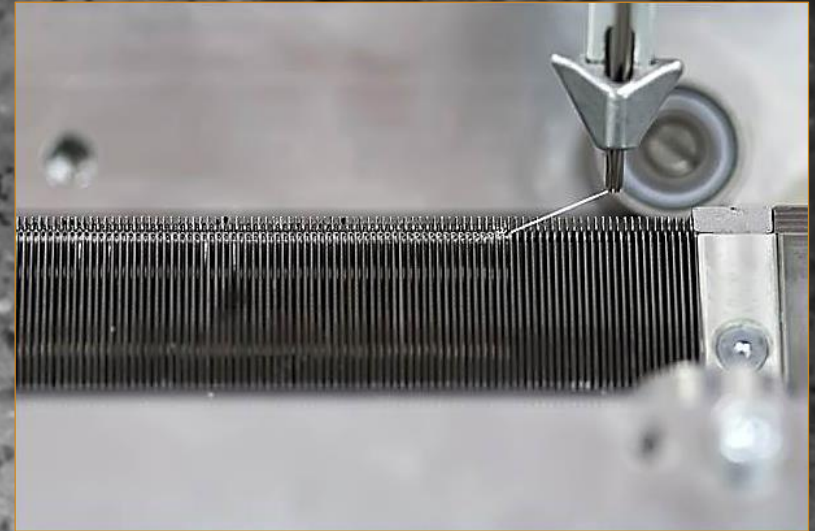
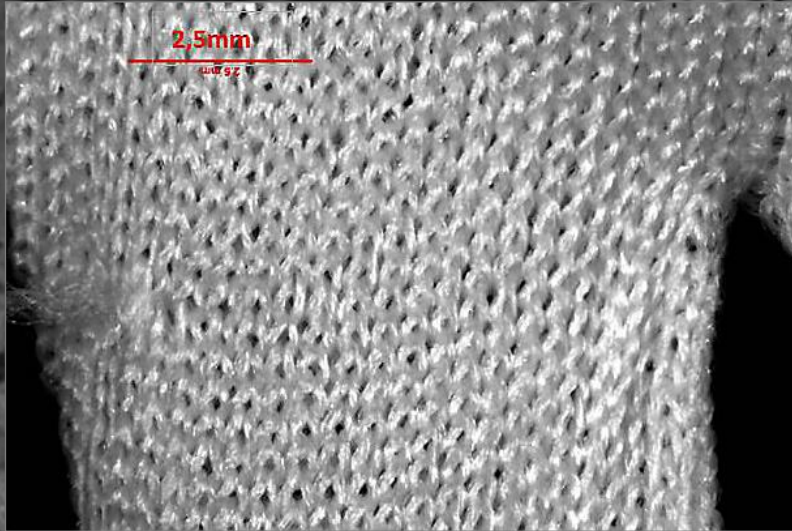
- Progress of colonization: the 1st and 41st day
- The growth of biofilm - fluorescent coloring: the 1st and 41st day
- Carrier for bioreactor: the 1st and 41st day



Biodegradable structures

- Processing of monofilament and biodegradable yarn
- Hernia meshes
- 2D shaped hernia meshes





Vascular prosthesis - grafts

- Thin wall -knitted structure (24w/10mm; 20c/10mm)
- Bifurcated structure
- Variable diameter of grafts
- Device pro production flat knitting machine gauge 30E

